



Coventry and Warwickshire Labour Market Summary

October 2011



research@warwickshire.gov.uk

Introduction

The Observatory has been commissioned to produce a quarterly labour market summary for the Coventry and Warwickshire sub-region. The briefing contains information on Job Seekers Allowance claimants, vacancies and worklessness data as well as the key messages emerging from the data.

Figures relate to Coventry and Warwickshire combined unless stated otherwise. Please contact the Observatory using the links at the foot of this page if you have any queries.

Key Messages

- The number of job seeker allowance claimants rose to just over 20,000 in August before falling slightly in September to 19,805.
- The number of people claiming for less than 6 months fell whilst the number of longer term claimants rose.
- The number of notified vacancies fell in August before rising again in September to 6,890.
- In the last quarter the number of claimants per vacancy has fallen in all areas except Rugby and Stratford-on-Avon.

Glossary

JSA = Job Seekers Allowance

ESA = Employment and Support Allowance

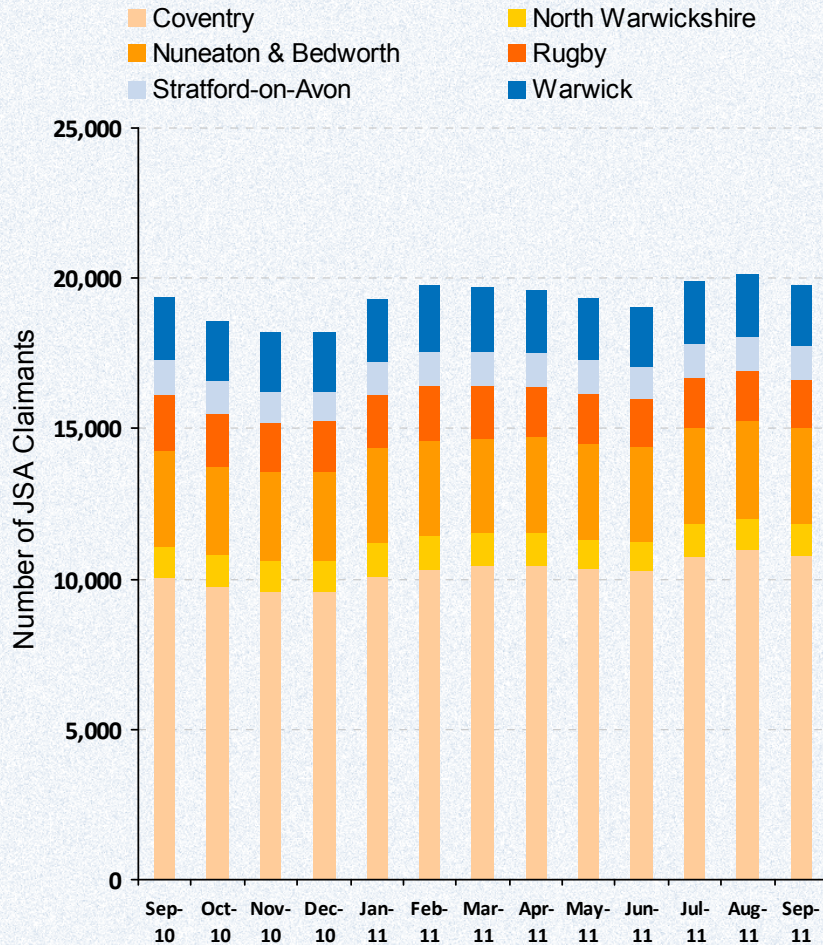
Notified Vacancy = Vacancies available through Jobcentre Plus

Out of Work Benefit = a range of benefits paid to those who are economically inactive, such as Incapacity Benefit

NB: The denominator used to calculate rates of claimant counts and DWP benefits has been updated and therefore rates shown in this Summary may be different to those shown in previous versions.

Job Seekers Allowance

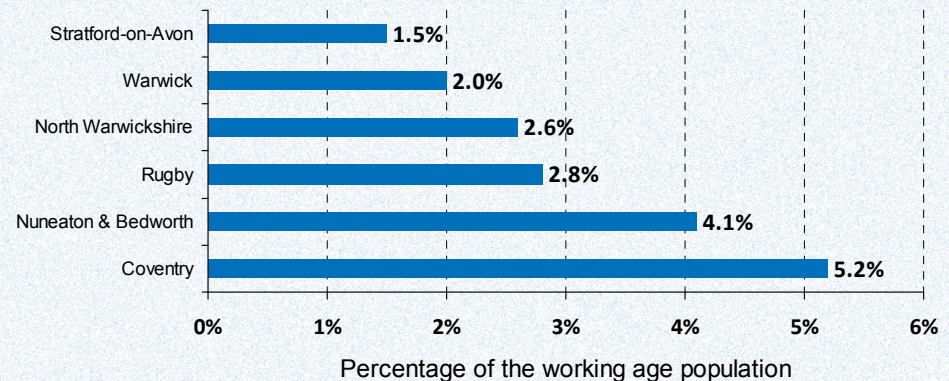
JSA Claimant Trend



Latest JSA Claimant Totals

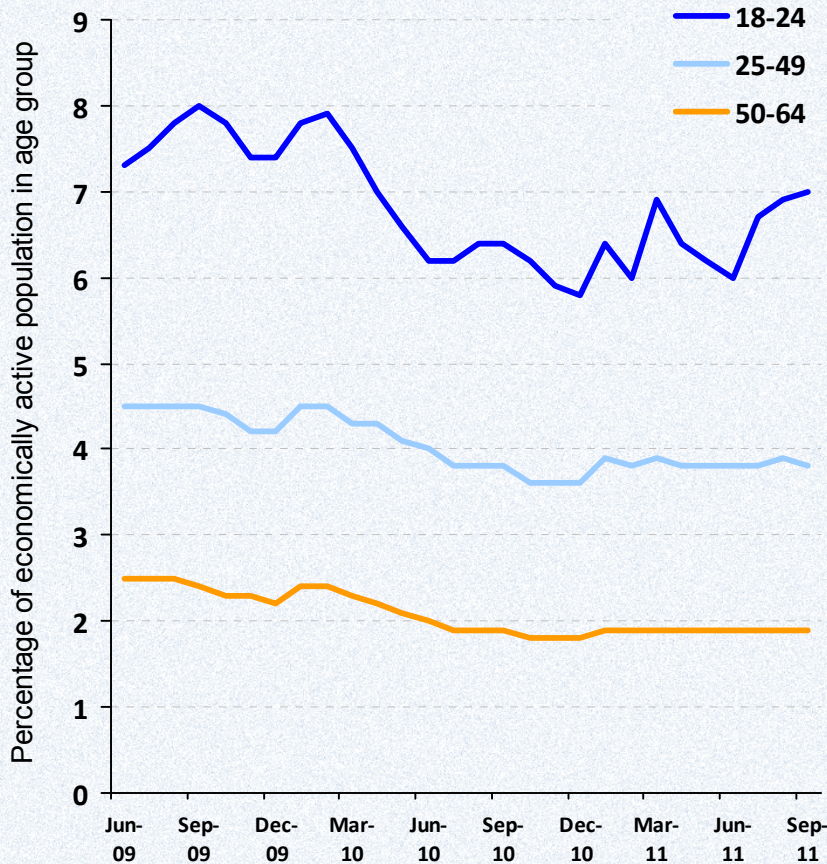
	September 2011	% quarterly change	% yearly change
Coventry	10,805	0.6	7.8
North Warwickshire	1,016	-5.5	-5.1
Nuneaton & Bedworth	3,185	-0.4	0.6
Rugby	1,655	-2.9	-11.0
Stratford-on-Avon	1,076	0.5	-8.5
Warwick	2,068	-0.6	-0.9

Latest JSA Claimant Rates

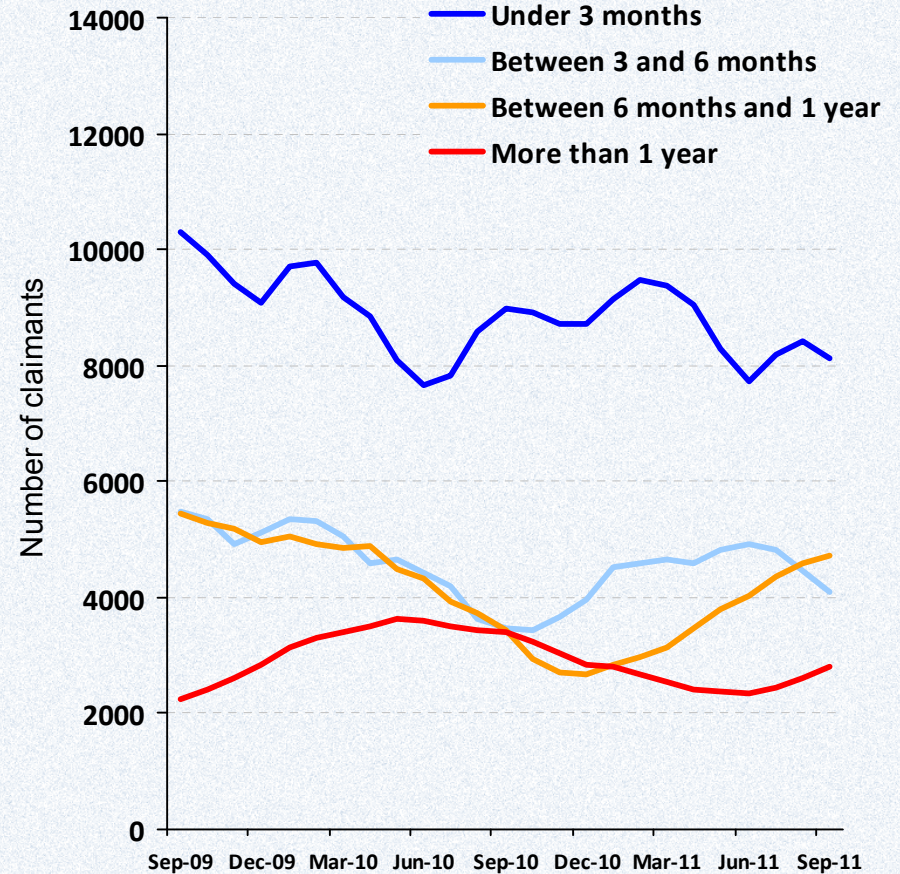


Job Seekers Allowance

JSA Claimants by Age

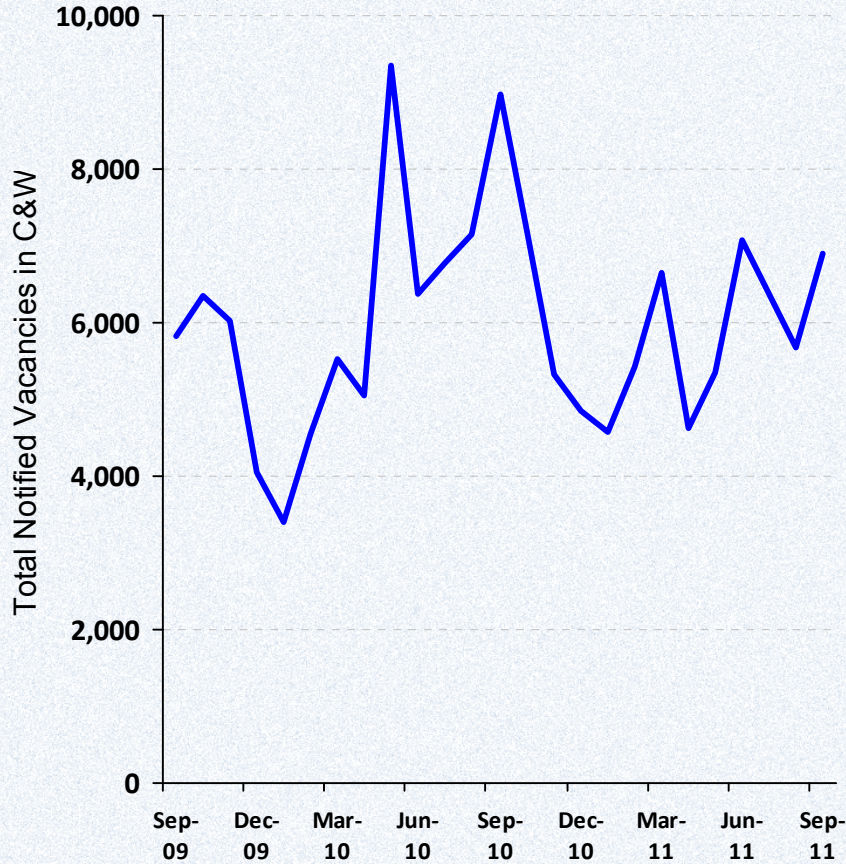


JSA Claimants by Duration

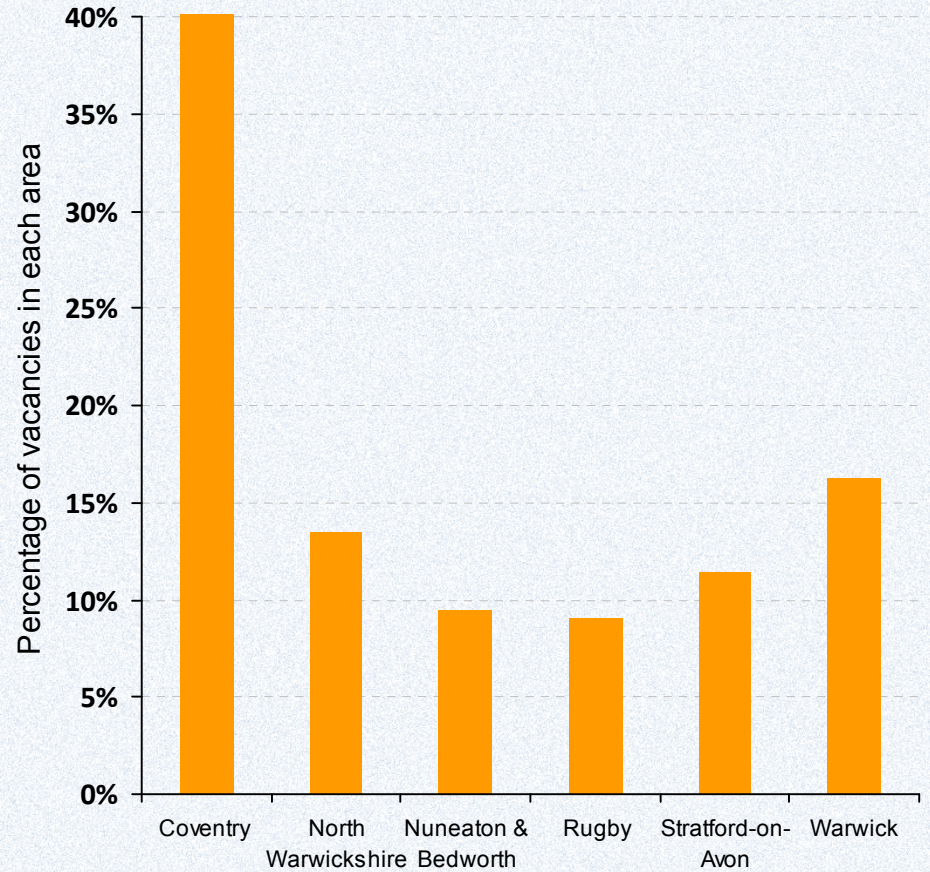


Vacancies

Notified Vacancies



Vacancies by Area

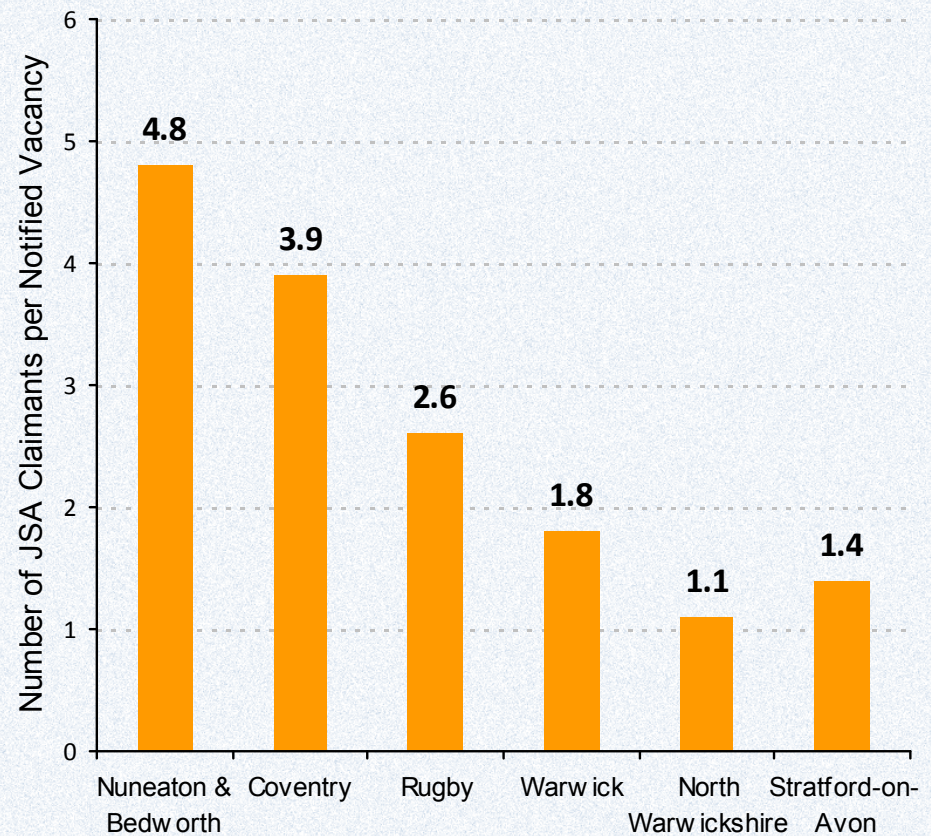


Vacancies

Vacancies by Type (top ten)

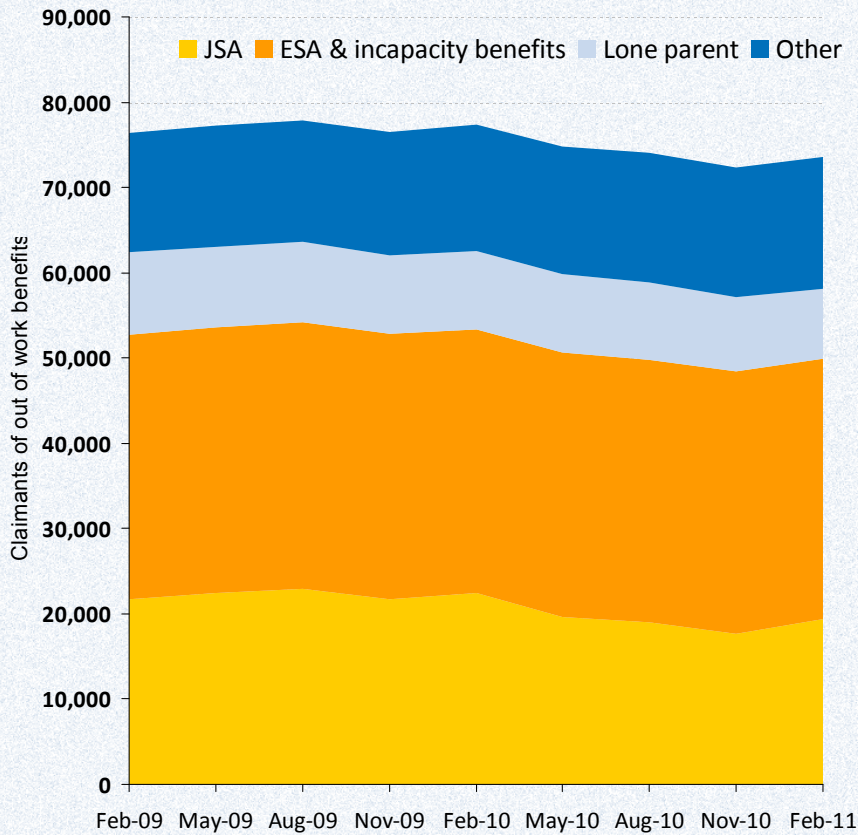
	Number	% of all vacancies
Heavy goods vehicle drivers	1,125	16.3
Other goods handling and storage	742	10.8
Care assistants and home carers	480	7.0
Sales representatives	405	5.9
Cleaners, domestics	208	3.0
Sales related occupations	192	2.8
Sales and retail assistants	185	2.7
Chefs, cooks	167	2.4
Fork lift truck drivers	153	2.2
Carpenters and joiners	137	2.0

Claimants per Vacancy



Out of work benefits ('worklessness')

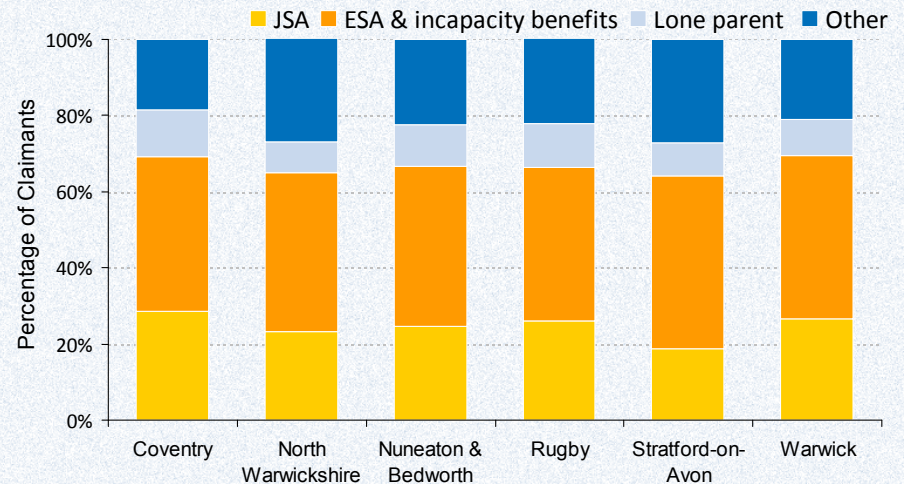
Worklessness Trend



Worklessness Rates by Area (Feb 2011)

	Claimants	% of working –age population
Coventry	35,710	17.1
North Warwickshire	4,780	12.0
Nuneaton and Bedworth	12,300	15.9
Rugby	6,650	11.4
Stratford-on-Avon	6,040	8.4
Warwick	8,110	8.8

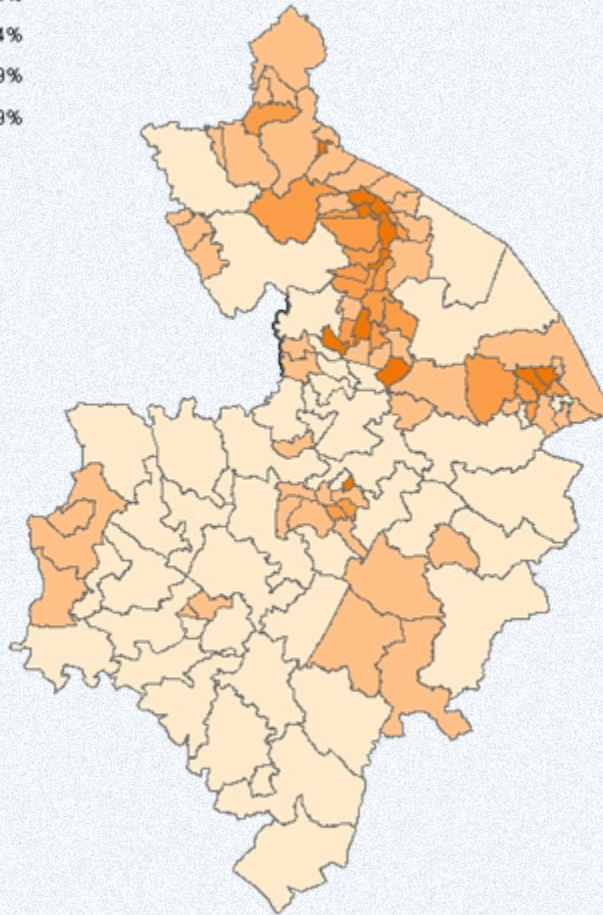
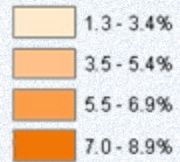
Benefit Claimants by Type and Area (Feb 2011)



Job Seekers Allowance rate by ward

Proportion of population aged 16-64

September 2011



Worklessness rate by ward

Proportion of population aged 16-64

February 2011

